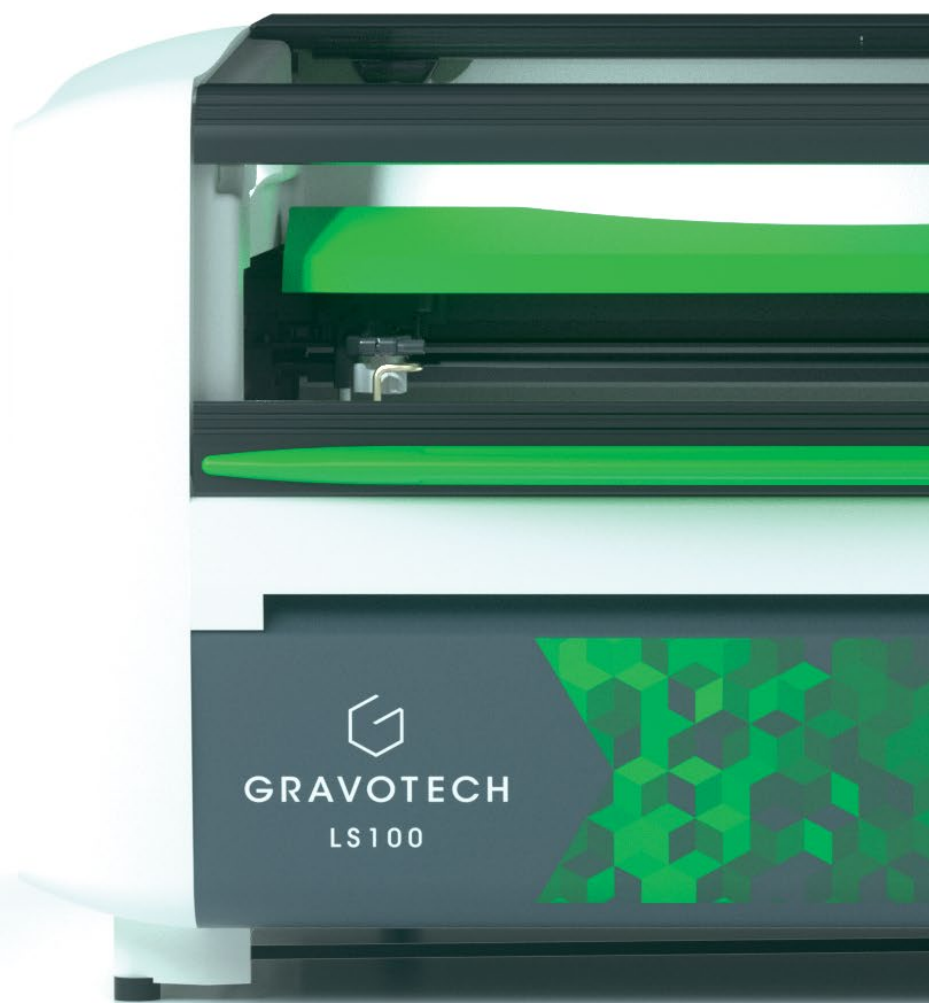




LASER TABLE

**LS100**



**GRAVOTECH**

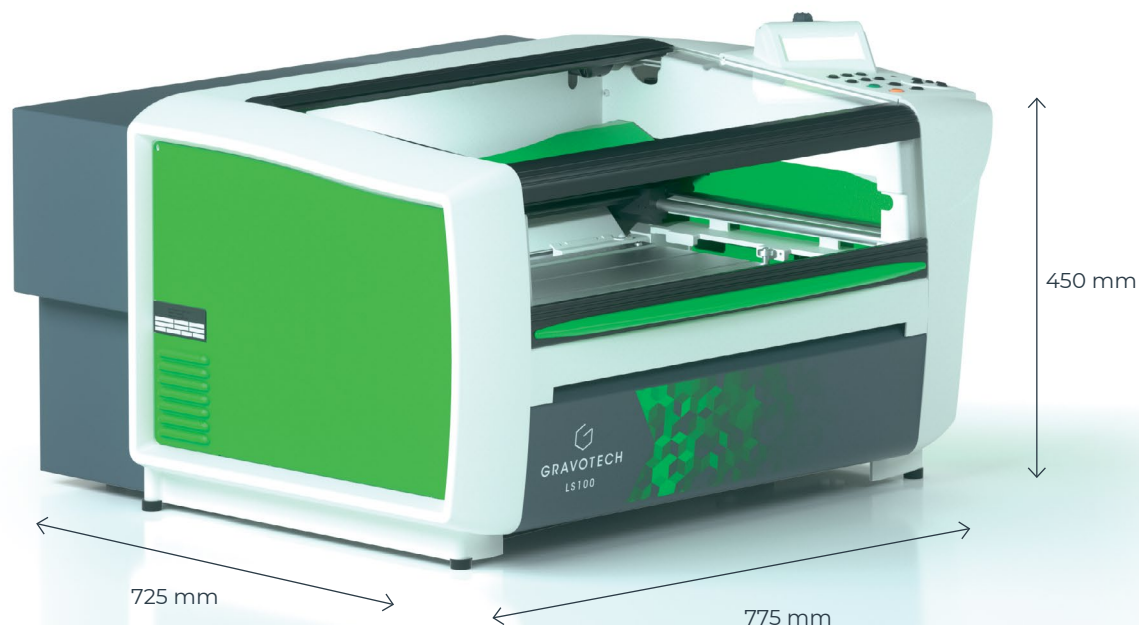
by  **BRADY**



## LASER TABLE LS100

CO2 laser engraver for signage, creative cutting, and personalization.

The LS100 is an easy to operate and compact laser engraver to cut and mark a wide range of materials. With its premium build, low maintenance and dedicated software, this small laser etching machine is the solution to be trusted for any application.



### **SINGLE WORK ENVIRONMENT**

LS100 is a premium solution, it is the only gantry laser on the market made of one-piece aluminum chassis, that includes multi-technology professional CAD/CAM software and an RF laser source.

### **THE SWISS ARMY KNIFE OF LASERS**

LS100 is a silent and compact laser engraver adaptable to industrial, commercial and office settings. Engrave glass, create plastic labels, shape acrylic, wood, cut, mark, and define folding lines on paper: this laser cutting and engraving machine can adapt to your every need.

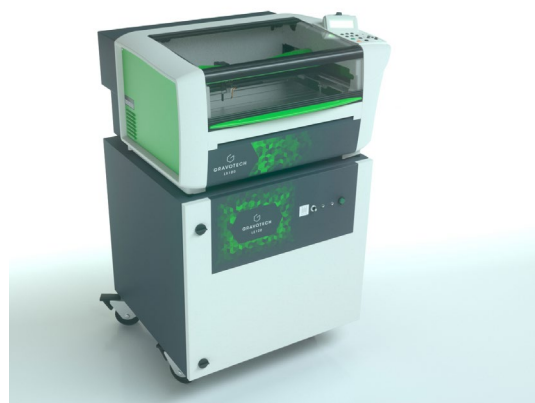
### **EASY WORKFLOW**

One by one or by batches, the LS100 improves your productivity thanks to time-savings features: automatic touch sensing, embedded control dashboard and backlit marking table with a wide front-loading door.

SEE OUR VIDEO



## KEY FEATURES



### Smart Laser Engraver

The LS100 is automated, silent and space-efficient.

No bulky and loud separate blower or compressor, the exhaust and air assist are integrated and triggered automatically.

Place the items into the well-lit cabinet and front-loading door and let the laser detect their height for accurate positioning.

All lasering parameters are saved in a material library for increased productivity.

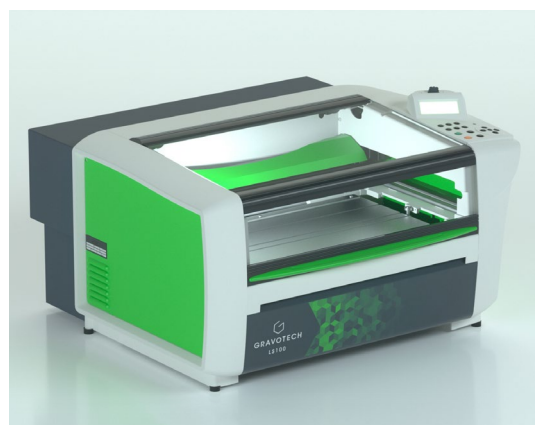


### Dedicated And Multi-Technology Software

The LS100 is available with Gravostyle, our unique dedicated software: create and edit designs, vectorized logos and pictures, use specific fonts in every languages and alphabet, compose in Matrix mode.

This software is also an advanced piloting tool for your LS100.

This CO2 laser engraver can also be used with third party software.



### Energy Version

The LS100 is the only premium gantry laser etching machine with this size.

It also exists in the Energy version, an alternative for first-time buyers or those on a reduced budget.

It uses a different laser source that ensures the same cutting quality but with a slight reduction in engraving quality.

This option is only available at Gravotech.

LEARN MORE ABOUT THE LS100



# APPLICATIONS



Funeral plaques and headstones engraving



Engraving & laser cutting of custom ink stamps



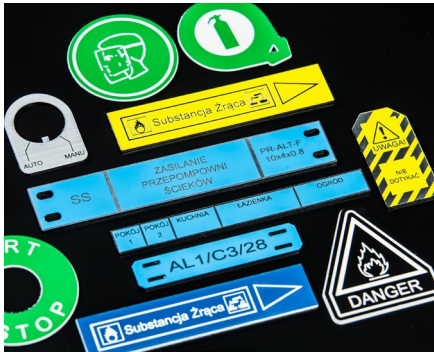
Pet and dog tags engraving



POP displays and sign engraving



Express engraver



ID tags

# MATERIAL CHARACTERISTICS

Technology		CO2
Materials	Rubber	◻◻◻
	Paper, cardboard, cork	◼◻◻
	Leather	◻◻◻◻◻
	Glass, crystal	◼
	Anodized aluminum	◼
	ABS	◻
	Acrylics & derived	◻◻◻
	Wood, varnished wood, MDF	◼◻◻◻
	Engraving materials	◼◻◻◻

◻◻◻ = Cutting

◻◻◻◻◻ = Engraving / Deep marking

◼ = Marking / Etching

MAKE YOUR SAMPLES



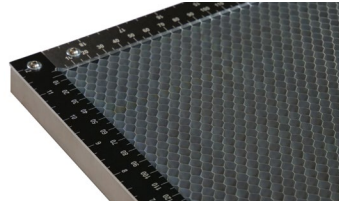


## ACCESSORIES



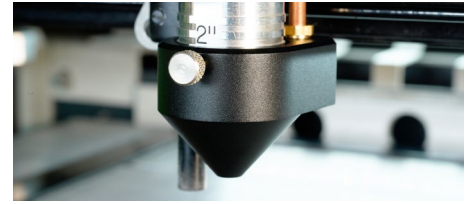
### Exhaust system

Laser fume extractors guarantee clean and safe work and working environment. Their role is to suck up dust and gases and filter out odours produced during machining.



### Laser cutting bed

Laser cutting bed to help you with your cutting jobs and prevent damage to the part or laser engraving machine.



### Laser nozzle

Laser nozzle to help you with your cutting jobs and to protect the lens of your laser engraving machine.

## SOFTWARE : GRAVOSTYLE™



### Expert software made by engravers for engravers

Benefit from advanced possibilities and save time! Unique features available: Braille, Photostyle, Print & Cut, and more. Due to our history of making engraving machines, we have a full understanding of the engraving process.

### Gravostyle™: unique software for laser and rotary

No need to learn how to use another software, switch in one click on the Gravostyle™ interface to set-up laser or rotary engraving!

## SERVICE & SUPPORT



### Training

Standard or customized training sessions, at your place or online.



### Technical Support

Gravotech experts dedicated to support and guide you.



### Maintenance

Gravotech has established a dedicated program for each machine type, including cleaning, adjustments, safety checks and more.

# TECHNICAL DATA

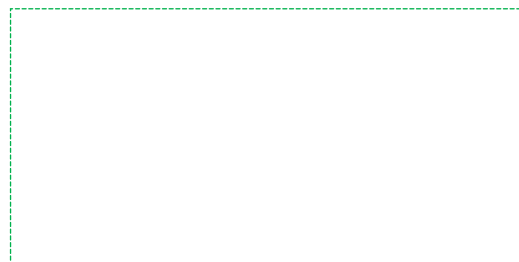
	LS100
Laser source	CO2
Available power version	25 W - 30 W - 40 W - 60 W
Available lenses	1.5" - 2.0" - 2.5" - 3.5" - 4.0"
Marking area max	460 x 305 mm (18 x 12 in)
Max object height	145 mm (5.7 in)
Max object weight	15 kg (33 lbs)
Machine dimensions (L x W x H)	775 x 725 x 450 mm (30.5 x 28.5 x 17.8 in)
Weight (kg)	43 kg (94.8 lbs)
Z axis auto	145 mm (5.7 in)
Noise (dB a)	≤ 70
Point & shoot	Yes
Operating temperature	10 °C (50 °F) - 35 °C (95 °F)
Connection to computer	USB
Maximum speed	2540 mm/s (100.000 in/s)
Classification	CDRH: Class 2
Beam diameter	0.1 mm (0,004 in) to 0.4mm (0,016 in)



[contact@gravotech.com](mailto:contact@gravotech.com)  
[+33 \(0\) 4 78 55 85 50](tel:+330478558550)  
[www.gravotech.com](http://www.gravotech.com)

**GRAVOTECH MARKING**  
466 rue des Mercières - Z.I. Perica  
69140 Rillieux-la-Pape  
France

Distributed by:



Follow us:



[gravotech.off](https://www.instagram.com/gravotech.off)



[Gravotech Group](https://www.youtube.com/GravotechGroup)



[Gravotech](https://www.linkedin.com/company/Gravotech)



[Gravotech - Gravograph](https://www.facebook.com/Gravotech-Gravograph)